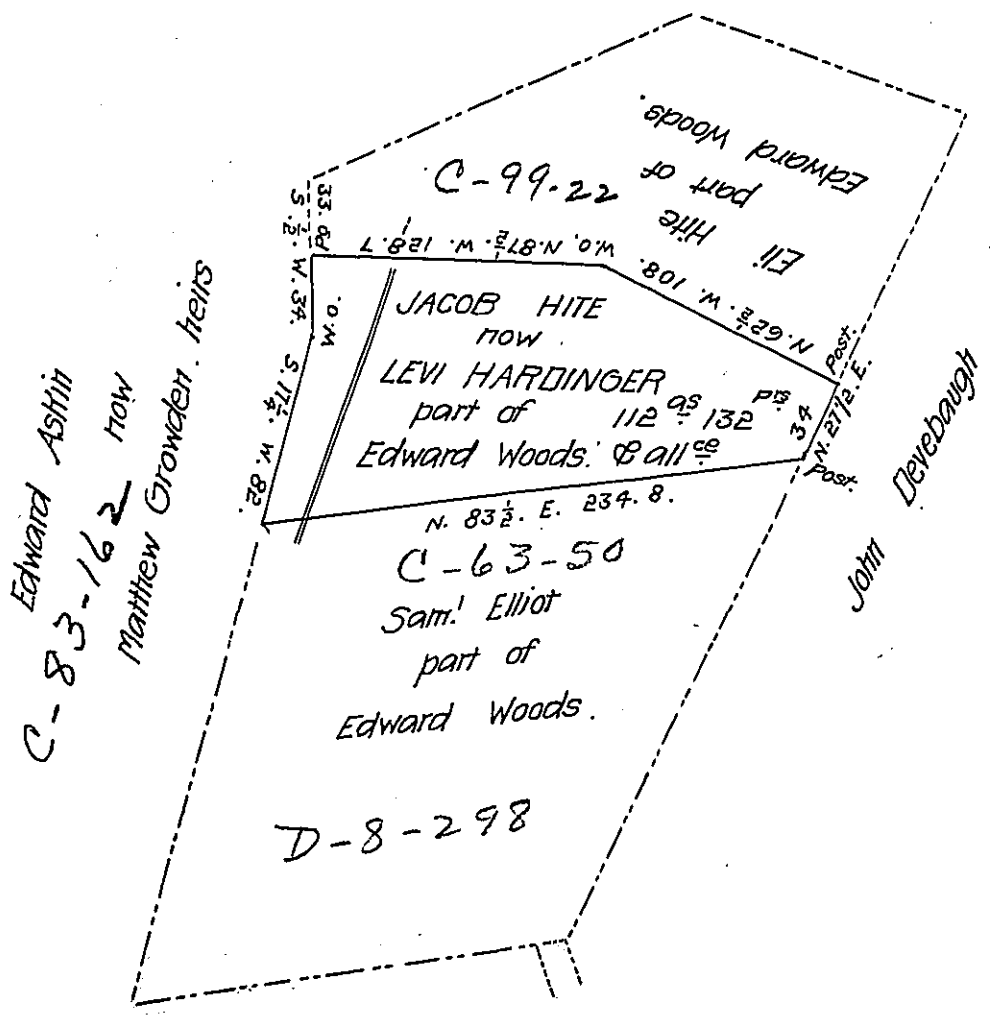


A-63-272



Situate in Cumberland Vally Township Bedford County Containing 112 a.s & 132 perches & allowance &c being part of a larger tract of land Containing 445 acres & 52 per. Surveyed the 6th Nov. 1766 on application N^o 1386 dated 27th September 1766 Granted to Edward Woods & Resurveyed according to the original marks on the Ground & the above Struct off for Levi Hardinger the present owner. The dotted lines Represents the Edward Woods tract as is on the Ground held by the present owners; the 12th December 1848 approved of the 9th day of Feb. 1849.

Isaac Mensinger D.S.

To John Laporte Esq^r S.G.

IN TESTIMONY that the above is a copy of the original remaining on file in the Department of Internal Affairs of Pennsylvania, made conformably to an Act of Assembly approved the 16th day of February, 1833, I have hereunto set my Hand and caused the Seal of said Department to be affixed at Harrisburg, this twentieth day of July 1908.

Nevoy Houck
 Secretary of Internal Affairs.